

# GFI Network Server Monitor™

Real-time network and server monitoring solution

- Easy to install and use
- Competitive pricing
- Award-winning software
- Outstanding performance

## Automated server and network monitoring made easy!

GFI Network Server Monitor™ is a software solution that enables administrators to scan the network for failures or irregularities easy. With GFI Network Server Monitor, you can identify issues and fix unexpected conditions before your users (or managers) report them to you!

GFI Network Server Monitor maximizes network availability by monitoring all aspects of your Windows and Linux servers, workstations and devices (routers, etc). When a failure is detected, GFI's network monitor can alert you by email, pager or SMS, as well as taking corrective action by, for example, rebooting the machine, restarting the service or running a script. GFI Network Server Monitor actually tests the status of a service, rather than deducing a service status from generated events (as other products do), which is the only real way to ensure server uptime! GFI Network Server Monitor is easy to set up and use, and is competitively priced.

### BENEFITS

- **Monitor your network and servers for software and hardware failures**
- **Out-of-the-box monitoring of Exchange, ISA, SQL and Web servers**
- **Monitor disk space, services, processes, etc. on servers and workstations**
- **Easy to learn/use and easy to deploy – no client component/agent.**



## Enterprise-class architecture

GFI Network Server Monitor consists of a network monitoring service and a separate management interface. No agent software needs to be installed on the machines you wish to monitor. The Network Monitor Engine is multi-threaded and can run 40 checks at a time. This allows for high reliability and scalability to monitor both large and small networks.

## Built-in rules for several network servers and services

GFI Network Server Monitor's built-in monitoring rules include: Exchange Server 2000/2003, MS SQL, Oracle and ODBC databases, CPU usage, FTP & HTTP Servers Group Membership, Active Directory and NTDS, Disk Drive health, Disk Space, Event Log (with content checking), File Existence (with content checking), TCP, ICMP/Ping, SMTP and POP3 mail servers, printers, processes, services, UNIX Shell Scripts (RSH), SNMP and Terminal Server. Custom monitor functions can be created in VBScript and ADSI and WMI. With GFI Network Server Monitor you can monitor virtually anything!

## Monitors terminal servers by actually logging in

GFI Network Server Monitor can check the status of a terminal server by actually performing a complete login and checking if the session is established correctly. This monitoring method is superior to relying on the events that the terminal server generates (as Microsoft MOM does).

## Monitor your database servers (SQL/ODBC)

GFI Network Server Monitor can check the availability of all leading database applications. Out of the box, it can monitor Microsoft SQL Server via ADO. Other databases such as Access, FoxPro, Paradox, SyBase, Informix, IBM DB2 and many more can be monitored via ODBC.

## Monitor Linux servers

GFI Network Server Monitor includes extensive checks for monitoring Linux servers. You can monitor CPU usage, printer availability, file existence, process running, folder size, file size, users and groups membership, disk partition check and disk space. In addition, administrators can create any check by running a (bash) script through SSH.

## Takes corrective action automatically

After an unexpected condition has occurred, GFI Network Server Monitor can automatically correct the problem by restarting a service (or multiple services) upon failure; rebooting a server upon failure; or launching an executable, batch job or VBScript.

## Built-in computer monitor functions

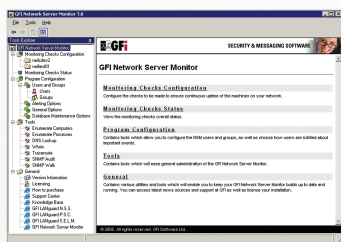
- **CPU usage function** – Ensure that a processor's usage does not go beyond a certain level
- **Performance counter** – Monitor any internal operating system counter, including counters used by SQL Server and MSMQ
- **Directory size function** – Ensure that a particular directory does not take up more than x amount of drive space
- And many more!

## Built-in Internet service functions

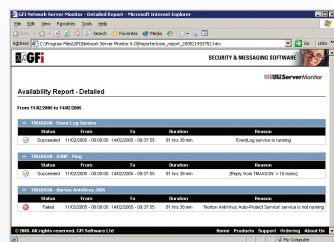
- **HTTP function** – Checks availability of HTTP and HTTPS sites; passes credentials if required
- **Website content checking** – Checks website content by specifying a text pattern
- **FTP function** – Checks availability of an FTP server/site
- **ICMP ping function** – Checks a remote host for availability
- **IMAP server function** – Checks that the IMAP service is functioning by logging into the service and checking the count of the emails contained in a specific folder on the IMAP server
- And many more!

## Other features:

- Alert notification via email, pager or SMS Support for SQL Server/MS Access as a database backend
- View network status from anywhere in the world
- Monitor remote event logs
- Custom network monitoring using VBScript and SSH
- Monitor users, groups and other Active Directory information
- Nested folder support
- Mimics administrative actions to ensure that a service is running
- Supports virtual environments



The GFI Network Server Monitor manager



Detailed network resource availability report

## System requirements

- Windows 2000 (SP4 or higher), 2003, XP, Vista or 2008 operating systems
- Windows Script Host 5.5 or higher (included in Internet Explorer 6 and in Service Pack 2 of Internet Explorer 5.5; you can download it separately from <http://msdn2.microsoft.com/en-us/library/ms950396.aspx>.)
- .NET Framework 1.1

↓  
**For more information and to download your free evaluation version please visit <http://www.gfi.com/nsm/>**

### Contact us

**Malta**  
Tel +356 2205 2000  
Fax +356 2138 2419  
sales@gfi.com

**UK**  
Tel + 44 (0)870 770 5370  
Fax + 44 (0)870 770 5377  
sales@gfi.co.uk

**USA**  
Tel +1 (888) 243-4329  
Fax +1 (919) 379-3402  
ussales@gfi.com

**Australia - Asia Pacific**  
Tel +61 8 8273 3000  
Fax +61 8 8273 3099  
sales@gfiap.com

For more GFI offices please visit <http://www.gfi.com/company/contact.htm>

**Microsoft**  
GOLD CERTIFIED  
Partner

**GFI**  
[www.gfi.com](http://www.gfi.com)