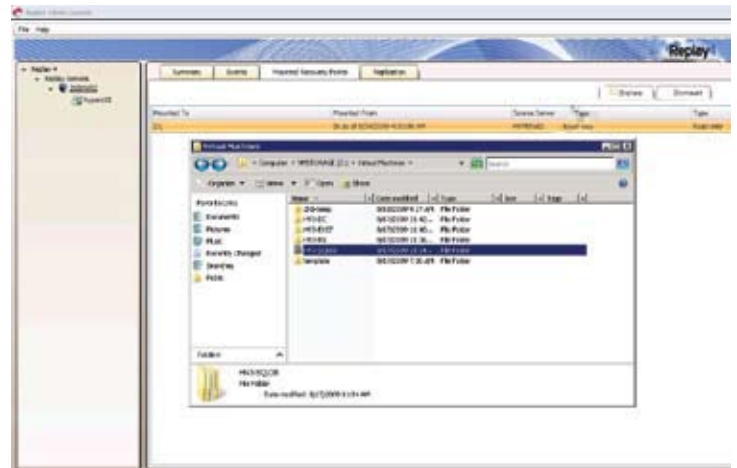


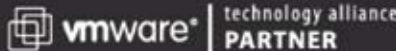
Replay for Hyper-V is an enterprise-class backup and disaster recovery solution designed for Windows Server 2008 Hyper-V environments. It supports both host and guest backup methodologies while delivering backup & recovery, advanced disaster recovery and replication capabilities all in one solution. With Replay for Hyper-V, the entire host, select volumes and individual files within virtual machines can be restored. Replay's compressed and deduplicated point-in-time images are mountable as drive letters or mount points delivering storage efficient backups and fast recoveries. AppAssure also offers a free Explorer shell extension for Windows 2008 R2 and Windows 7 that mounts VHDs as drive letters or mount points so you can access the files within VHDs in seconds.



- * Continuous application protection
- * Snapshot granularity of minutes
- * Bare-metal server recoveries
- * Application support for Exchange, SQL and SharePoint
- * Compression and deduplication of recovery points
- * Push button failover with High Availability features
- * Centralized monitoring and management of backups
- * Live volume restores dramatically reduce RTOs
- * Restore to Dissimilar Hardware is an available option
- * Portable rescue images enabling one-click server recoveries
- * Virtualization PartnerFile and application object level recoveries
- * Host based agents supports an unlimited number of guest virtual machines
- * Online point-in-time imaging for Hyper-V hosts and guest virtual machines
- * Flexible storage options, snapshots can be stored on DAS, SAN and NAS.
- * Off-site backups and Off-site recovery of virtual machines and servers to private cloud
- * Supports Windows Server 2008 with Hyper-V and Windows Server 2008 R2 with Hyper-V
- * P2V, V2V, Export to virtual machines for migrations and testing (VMware and Hyper-V Supported)
- * Off-host processing eliminates backup window and allows you to meet aggressive RPO demands
- * Recovery points can be stored on a remote or removable disk drive, DAS NAS or SAN storage
- * Automatic creation and continuous updates of virtual standby environments. Supports VMware and Hyper-V P2V,V2V,P2P



www.AppAssure.com



AppAssure Software is the home of Backup 2.0. Committed to changing the way businesses think about protecting their mission-critical applications and how they recover from disasters. AppAssure provides application-aware, disk-based server imaging solutions that accelerate application backups and recovery for Windows servers. Start protecting Microsoft Exchange, BES, SharePoint, SQL, and Hyper-V smarter, with the innovations of Replay.

SiteMap | Privacy | © Copyright 2009, AppAssure Software, Inc. All rights reserved.